

R2D Automation Stand Alone Sorter with OCR

- The R2D Sorter is a Single Wafer Sorter with Scribe reading capable of randomization, compacting, single wafer transfer via drag and drop or customizable recipes.
- Integrated industry leading Cognex OCR 1741/1742

Standard Features:

- Double cassette sensors
- Wafer detection in cassette
- Current limiters on all motors
- Electric safety device (current cut)
- Power "off "security
- Automatic home position
- 17" color LCD Touchscreen
- Automatic mapping system
- TCP/IP Host connection
- Error message and cycles recorded
- Customizable Light tower Protrusion sensor
- Teflon (Nuflon) coated end effector
- Clean Room color paper and electronic PDF documentation



Options:

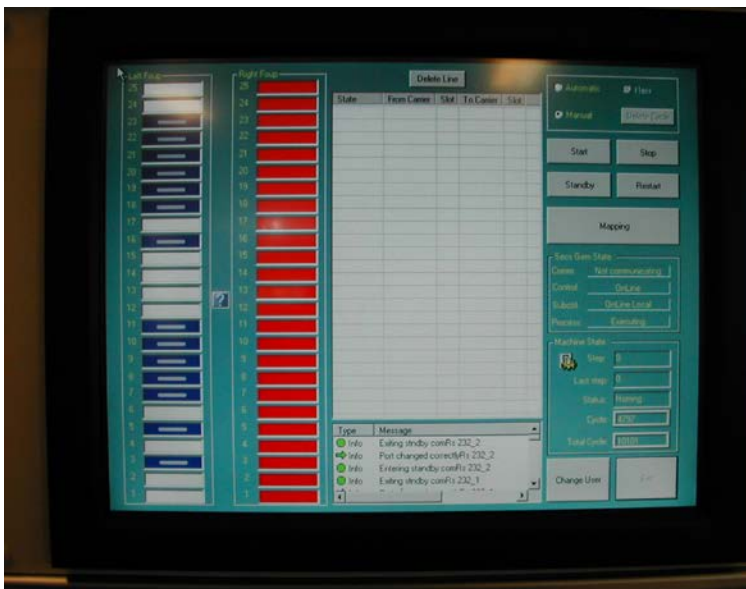
- Additional Load Port
- Integrated Notch or Flat Finder with OCR op
- Dual OCR front and backside reading
- Optical wafer aligner
- Flip wafer 180 Degrees
- Bar Code Gun
- RF ID Reading for Cassette
- Secs/Gem
- Laminar Flow
- Tilted load port
- Batch aligner/load port
- FOSB auto turn table
- FOUP opener load port
- Remote controlled wafer inspection station
- Ionizer
- Bernoulli (thin wafer)

Specifications:

- 6" > 550 wph-320 wph w/ocr
- 8" > 500 wph-280 wph w/ocr
- Uptime: > 99.8 %
- MTBF: > 4000 hours
- MTBA: > 750 hrs
- MTTR: < 1hr 1

Facilities and Requirements:

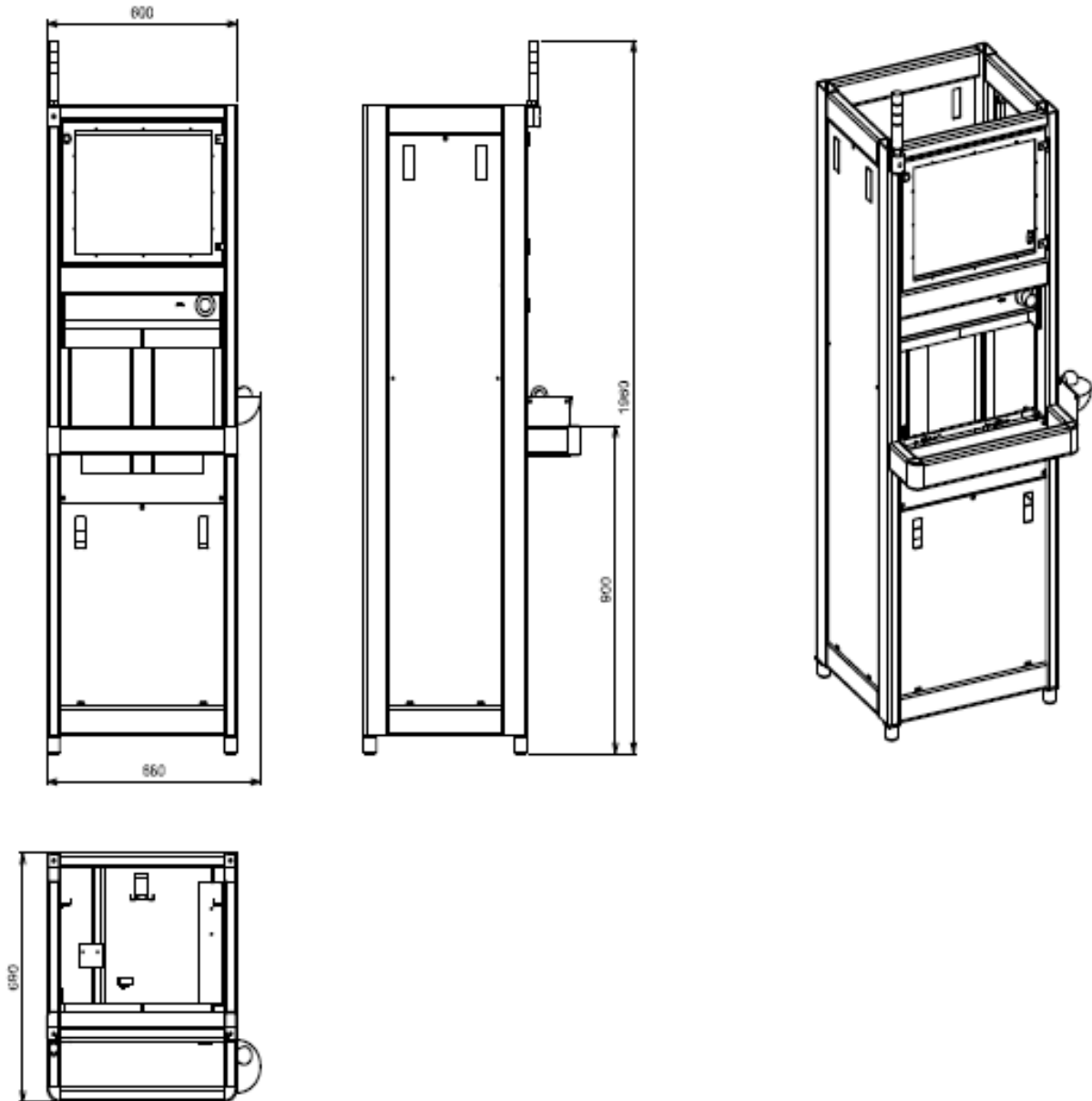
- Vacuum: 0.3 – 2.0 bars
- Power: 100-240 VAC
- Frequency: 50-60 Hz
- Full Load Amps 1.2-0.6 A



- Drag and Drop Via Touchscreen

R2D: Stand Alone Sorter with OCR

1.2. Dimensions



Width : 680 mm / 26.75"

Depth : 690 mm / 27.25"

Height : 1960 mm / 77.25"

Weight : 150 kg / 331 lbs